



2019 Global Immersion Programs

Three unique opportunities for MSW students to gain

- ▶ International Exposure
- ▶ Comparative Perspectives
- ▶ Practice Skills
- ▶ Informed View
- ▶ Awareness

Overview of Programs

- ▶ Pathways to Immigration: Mexico
 - ▶ *San Diego, Ensenada, Mexico City, Puebla City*
- ▶ Addressing The Grand Challenge of Social Stigma: LGBT Movements in Brazil
 - ▶ *São Paulo*
- ▶ Social Innovation in South Africa: Approaches to Accelerating Social Change
 - ▶ *Cape Town*



PATHWAYS TO IMMIGRATION: MEXICO



General Information

- ▶ Participants will explore and experience a potential migratory pathway that connects Puebla, Mexico to Southern California.
- ▶ Classes will be held in Los Angeles and virtually with the starting point of the immersion being San Diego with participants “migrating” across the international border with Mexico through Ensenada, Mexico City and finally ending in Puebla where they will visit *la comunidad expulsora de migrantes* (migrant sending community).
- ▶ The ten-day immersion will include presentations from community leaders, activists, professionals, academics and others who will share their experiences and perspectives on immigration from Mexico to the United States.

What Students Will Gain

- ▶ Explore and experience a potential migratory pathway that connects Puebla, Mexico to Southern California.
- ▶ Understand and know how to successfully engage members of immigrant populations.
- ▶ Develop and appreciate a deeper understanding of immigration dynamics.
- ▶ Opportunities to examine social issues and solutions related to the engagement of and social service delivery to immigrant populations.

Field Sites and Excursions

▶ San Diego



U.S. Customs and
Border Protection

alliance
SAN DIEGO

Mexico City



▶ Ensenada

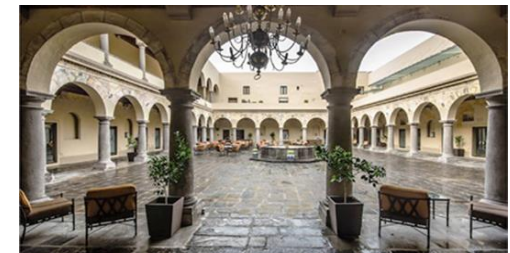
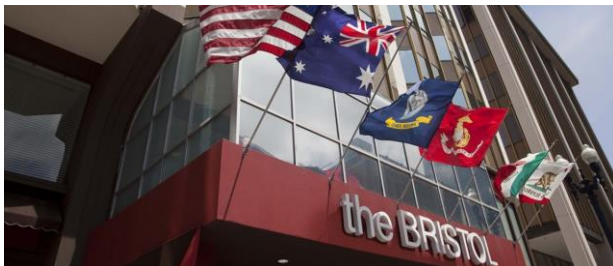


▶ Puebla



Housing

- ▶ USC will arrange for lodging in San Diego, Ensenada, Mexico City and Puebla City.



Program Format

- ▶ Virtual Platform (tentative)
 - ▶ January 26, 2019 (9:00am-2:00pm PST)
 - ▶ February 9, 2019 (9:00am-2:00pm PST)
 - ▶ March 2, 2019 (9:00am-2:00pm PST)
 - ▶ March 30, 2019 (9:00am-2:00pm PST)
 - ▶ April 20, 2019 (9:00am-2:00 pm PST)
- ▶ San Diego and Mexico
 - ▶ March 7-17, 2019

Instruction will combine university faculty and guest speakers, discussion panels, and site visits to government agencies, non-profits, advocacy organizations, etc. Visits to cultural sites and participation in special events as well as field excursions.

Course Instructor



Omar Lopez

Clinical Associate Professor,
Field Education Director,
Workforce Development and
Stipend Programs

Omar Lopez is a clinical associate professor of field education. He holds an administrative appointment as assistant director of field education, leading a team of faculty and staff who manage and implement six specialized workforce development programs. These programs provide stipends to students pursuing careers in fields such as public child welfare and public mental health. He also oversees two of these programs as project coordinator for the California Social Work Education Center.

Outside of work, Lopez actively volunteers for several nonprofit boards. As the first vice chair for the Chicano Federation, one of the largest nonprofit social services agencies in San Diego County, he played a significant role in setting policy for how services were delivered to the community. He also served as an adviser for Consejo Consultivo del Instituto de los Mexicanos en el Exterior, an advisory body within the Ministry of Foreign Affairs of Mexico, CCIME has a mandate to analyze problems, challenges and opportunities facing Mexican communities in the United states and Canada.

For More Information...

Omar Lòpez, MSW

Clinical Associate Professor and
Assistant Director, Center of Field Education
USC Suzanne Dworak-Peck School of Social Work
213.743.2484 • omarl@usc.edu

Dan Hester

Program Administrator
Office of Global and Community Initiatives
USC Suzanne Dworak-Peck School of Social Work
MRF 215
213.740.3939 • sowk.immersions@usc.edu



ADDRESSING THE GRAND CHALLENGE OF SOCIAL STIGMA: LGBT MOVEMENTS IN BRAZIL

General Information

- ▶ Participants will examine structural stigma from the context of Brazil and how social stigma relates to LGBT identity.
- ▶ The 10 day immersion in São Paulo involves direct interaction with LGBT youth, adults, social service providers and policy advocates.
- ▶ Students will learn the ways in which structural stigma influences individual behavioral health patterns. They will also gain an understanding of the effects that such forces have on the lives of the Brazil LGBTQ population and how these issues impact the delivery of wellness and mental health services in contemporary South America.

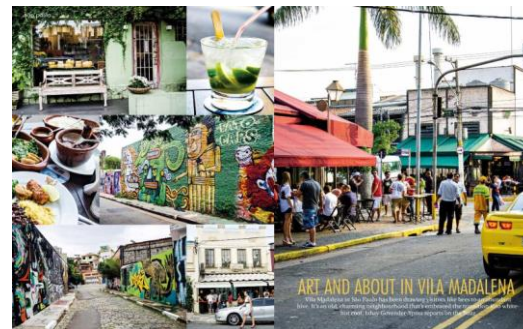
What Students Will Gain

- ▶ Understand the implications of forces that contributed to Brazil's LGBTQ history.
- ▶ Increase knowledge of the interconnection between oppression and issues of quality of life and social justice for marginalized and disenfranchised populations.
- ▶ Develop awareness of salient Brazilian economic, social, political and cultural issues.
- ▶ Develop critical thinking about the parallel challenges and strengths facing Brazil and the United States.

Field Sites and Excursions

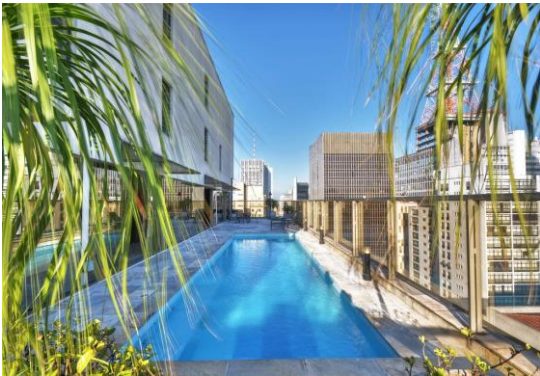


▶ São Paulo



Housing

- ▶ USC will arrange for lodging in São Paulo



Program Format

- ▶ Virtual Platform
 - ▶ January 19, 2019 (10:00am-12:00pm PST)
 - ▶ February 16, 2019 (10:00am-12:00pm PST)
 - ▶ March 2, 2019 (10:00am-12:00pm PST)
 - ▶ April 6, 2019 (10:00am-12:00pm PST)
- ▶ São Paulo
 - ▶ March 7-17, 2019

Instruction will combine university faculty and guest speakers, discussion panels, and site visits to government agencies, non-profits, advocacy organizations, etc. Visits to cultural sites and participation in special events as well as field excursions.

Course Instructor



Erik Schott

Clinical Associate Professor,
Assistant Director,
Field Education

Erik Schott is a licensed clinical social worker and educational psychologist, specializing in the areas of attention deficit hyperactivity disorder (ADHD); HIV/AIDS; couples therapy; addictions; LGBTQQA issues; and childhood and adolescent developmental disabilities. A certified therapist in eye movement desensitization and reprocessing (EMDR) and cognitive behavioral therapy, he has clinical interests in the effects of institutionalized trauma on knowledge acquisition and health outcomes. His research interests include adult ADHD identity development.

Schott has worked as a front-line clinician on the micro, mezzo, and macro levels. He was the former director of the CHOISS Program at the Serra Project, a housing agency serving individuals and families with HIV/AIDS and multiple disabilities. Currently, he teaches in the Human Behavior and Social Environment Sequence and the Health concentration. Schott integrates real-world knowledge into the classroom environment through his experiences as a psychotherapist in private practice, as well as a community-based health social worker. He is a two-time graduate of Troy and a member of the Social Work and Lambda Alumni Associations.

For More Information...

Erik Schott, EdD, MSW, LCSW

Clinical Associate Professor, Field Education
USC Suzanne Dworak-Peck School of Social Work
213.821.7051 • eschott@usc.edu

Dan Hester

Program Administrator
Office of Global and Community Initiatives
USC Suzanne Dworak-Peck School of Social Work
MRF 215
213.740.3939 • sowk.immersions@usc.edu



SOCIAL INNOVATION IN SOUTH AFRICA: APPROACHES TO ACCELERATING SOCIAL CHANGE

General Information

- ▶ Participants will explore and experience a unique cultural immersion program in South Africa based on human-centered design and design thinking that will be used to innovate and develop solutions to complex social problems in the post-apartheid era.
- ▶ The program will begin with sessions on the USC campus and virtually followed by ten days in South Africa where participants will be immersed in the social, cultural and political life of the country with visits to organizations, universities, and neighboring cities/communities.
- ▶ The immersion will include lectures with faculty and guest speakers, discussion panels, experiential and reflective exercises, and group-based assignments. The program will also include site visits to social service, community and human rights organizations, as well as cultural excursions.

What Students Will Gain

- ▶ Examine the historical, economic, political, social, and cultural context of South Africa.
- ▶ Summarize understanding of the historical, economic, political, social, and cultural context of South Africa.
- ▶ Apply human-centered design and design thinking to innovate and solve problems.
- ▶ Examine current solutions and trends to social issues in South Africa.

Field Sites and Excursions

► Cape Coast and Western Cape

Towards
the Human
City



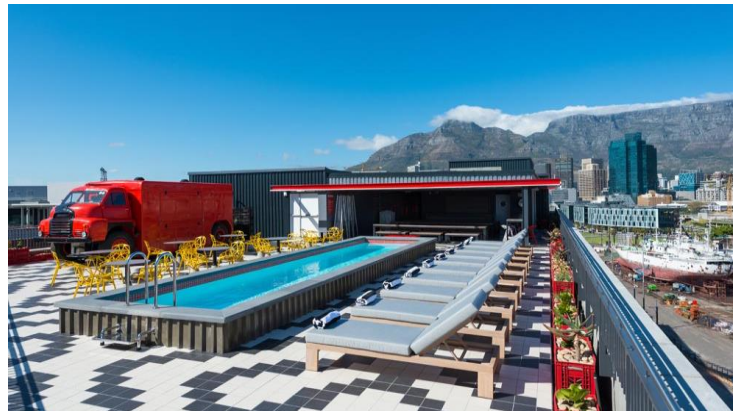
UNIVERSITEIT
STELLENBOSCH
UNIVERSITY



USC Suzanne Dworak-Peck
School of Social Work

Housing

- ▶ USC will arrange for lodging in Cape Town



Program Format

- ▶ Virtual Platform

- ▶ January 11, 2019 (5:00pm-7:00pm PST)
- ▶ January 15, 2019 (5:00pm-7:00pm PST)
- ▶ February 1, 2019 (5:00pm-7:00pm PST)
- ▶ February 15, 2019 (5:00pm-7:00pm PST)
- ▶ March 1, 2019 (5:00pm-7:00pm PST)

- ▶ Cape Town

- ▶ March 7-17, 2019

Instruction will combine university faculty and guest speakers, discussion panels, and site visits to government agencies, non-profits, advocacy organizations, etc. Visits to cultural sites and participation in special events as well as field excursions.

Course Instructor



Renée Smith-Maddox

Clinical Professor & Vice Chair,
Department of Social Change
and Innovation,
Associate Dean, Diversity,
Equity, & Inclusion

Renée Smith-Maddox is a clinical associate professor and Vice Chair of Curriculum for the Department of Social Change and Innovation. She teaches online and on-the-ground courses in the school's Master of Social Work and Doctor of Social Work programs. She is the lead instructor for the policy advocacy and social course and serves as the Associate Dean, Diversity, Equity, & Inclusion. At the university level, she is Chair of the Provost's Diversity and Inclusion Council and is co-chair of the Campus Climate Committee. She also works with the Provost's office to develop programs and initiatives that raise awareness and provoke dialogue about campus climate issues.

Smith-Maddox has worked as an executive director with the Posse Foundation, the Los Angeles Urban League, and First Place for Youth. In this capacity, she focused on fund development and designing service delivery systems for college access programs, workforce development initiatives, and transitional services for foster care youth. From this work, she has come to understand the issues that nonprofits face and the sustainable creative solutions that are needed to address their existing and emerging challenges. She is also a professional coach and volunteers for cause-specific efforts that promote the progress individuals and organizations are making in areas such as youth development, human trafficking, and homelessness.

For More Information...

Renée Smith-Maddox, Ph.D

Clinical Professor & Associate Dean, Diversity,
Equity, and Inclusion
Vice Chair, Department of Social Change and
Innovation
USC Suzanne Dworak-Peck School of Social Work
310.497.6953 • smithmad@usc.edu

Dan Hester

Program Administrator
Office of Global and Community Initiatives
USC Suzanne Dworak-Peck School of Social Work
MRF 215
213.740.3939 • sowk.immersions@usc.edu

Program Costs

- ▶ Tuition:
 - ▶ \$1,863 x 3 Units=
\$5,589 plus Academic Fees
- ▶ Program Fee:
 - ▶ \$1,850 plus **Transportation**
- ▶ Estimate Round Trip Transportation (from LAX):
 - ▶ Mexico: **\$300-\$500**
 - ▶ São Paulo: **\$1,500-\$1,750**
 - ▶ Cape Town: **\$1,500-\$1,750**

Program Fee includes: Lodging (double room occupancy, breakfast included), local transportation, weekday lunches, cultural activities, tours, and field visits.

Other Fees include: Required health insurance if not enrolled in mandatory USC health insurance plan. Participants are also responsible for their own visas (if required) dinners, weekend lunches, snacks, non-program local transportation and other incidentals.

Additional Information

▶ Application Process

- ▶ Application and \$250.00 non-refundable deposit are due by **Friday, October 5, 2018**. (Checks or money orders made out to the **University of Southern California**)
- ▶ In order to apply, you must have a minimum 3.0 GPA and have completed all foundation requirements. The sooner you apply, the better chance you will have in being accepted into the program of your choice.
- ▶ Program fee balance is due no later than **Friday, January 18, 2019**.

Note: You must be enrolled in 3-unit elective social work course in order to participate on a global immersion program.

▶ Financial Aid

- ▶ If you are receiving financial aid, you may also be able to use it toward international study. See the School's Office of Scholarship Programs.

Which Immersions are you applying to? Please rank the Immersion you are most interested in. *

	1	2	3	Not Interested
Pathways to Immigration: Mexico	<input type="radio"/>	<input type="radio"/>	<input type="radio"/>	<input type="radio"/>
Addressing the Grand Challenge of Social Stigma: LGBT Movements in Brazil	<input type="radio"/>	<input type="radio"/>	<input type="radio"/>	<input type="radio"/>
Social Innovation in South Africa: Approaches to Accelerating Social Change	<input type="radio"/>	<input type="radio"/>	<input type="radio"/>	<input type="radio"/>



Supplemental Questions

Your answers to the following questions will be used to evaluate your application.

Why are you interested in the Immersion you are applying for? Briefly describe your expectations for the Immersion and what you would like to accomplish. (Minimum 100 words) *

Your answer

Describe any of your classes and/or experiences that might be related to this course. (Minimum 100 words) *

Your answer

What type of work do you see yourself doing in the next five years? (Minimum 100 words) *

Your answer

Are you involved in any caucuses/clubs or organizations within the School and/or around USC? *

Your answer

BACK

SUBMIT

Never submit passwords through Google Forms.

You can click the link below to Apply!!!

<https://goo.gl/forms/gyZpzMk8i4gV0zE3>