



SOCIAL CHANGE AND INNOVATION: NATIONAL IMMERSION IN **WASHINGTON, D.C.**

Introducing MSW students to the concepts of social change through the lens of innovative policy practice to advance human rights and justice.

This 6-day immersion program is offered during the spring semester and will take place in Washington, DC where students will work with a variety of organizations where they will be introduced to and able to apply innovative methods such as design thinking to address social problems.

Interact with NGOs, private, public, and government agencies that are at the forefront of developing innovative responses to social issues.

Train and prepare students to create innovative policies for sustainable community outcomes.

Join a nationwide network of social innovators committed to building innovation within organizations and enacting change.



Who can participate?

The program accepts a limited number of graduate-level social work students on a competitive, rolling admissions basis. Students must have a minimum 3.0 GPA and have completed all foundation/generalist practice requirements. Preference will be given to students in the last year of their studies, but first year students are still encouraged to apply.

Will I get credit for the program?

If you are enrolled in the USC Suzanne Dworak-Peck School of Social Work, you will receive 3-elective unit credits for completing the program.

What if I am taking 15 units of credit during the spring semester?

If you are a student in the USC Suzanne Dworak-Peck School of Social Work and are enrolled in 15 units during the spring semester, you will not need to pay additional tuition for the required 3-elective unit course.

Will this program help my chances of finding a job?

This highly interactive and experiential immersion will prepare students to become practitioners of innovation, ready to introduce new ways of thinking about and enacting change.

They will also develop and further refine valued professional skills including policy practice, decision-making, teamwork, and communication that will strengthen their leadership capabilities.

Is financial aid available?

If you are receiving or are eligible for financial aid, you may be able to apply it toward this program. For details, contact the School's Scholarship Programs Office.

Where will we stay?

USC will arrange housing at a hotel in Washington, D.C.

How much will the program cost?

Program costs include 7 nights lodging (double room occupancy), daily breakfasts, weekday lunches, local transportation in Washington, DC during program hours and field excursions. In addition, costs include a program administrative fee. Other fees are additional, including tuition for a required 3-unit course and a health insurance policy if not enrolled in the mandatory USC student health or other insurance plan. All participants will be responsible for their own travel to/from Washington, DC. In addition, students will also be responsible for dinners, weekend meals, non-program-related transportation, and other incidentals.

For additional information, please contact:

Dan Hester

Office of Global and Community Initiatives
hester@usc.edu | 213.740.3939



“ Vulnerability is the birthplace of innovation, creativity, and change. When failure is not an option, we can forget about creativity, learning, and innovation.

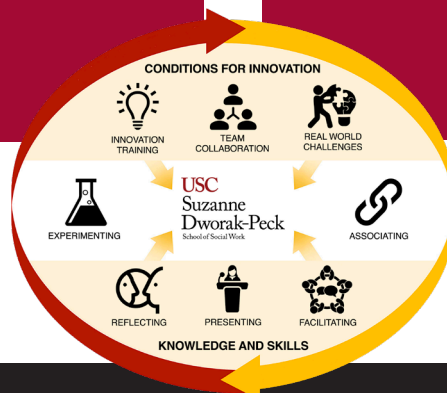
BRENÉ BROWN, PhD, MSW

”

“ Through the lens of design thinking, students will acquire the skills to develop innovative responses to social issues, build capacity for innovation within organizations, and better understand how to build intra-professional collaborations for social good.

MELISSA SINGH, EdD, LCSW, MS-HSA

”



Apply online and attend an info session to learn more:
<https://dworakpeck.usc.edu/global-programs/global-immersion-programs>