

# Social Change and Innovation

A guide to the SCI department of study within the MSW Program.

This department focuses on designing social change and leading innovation. The curriculum prepares students to improve living conditions and work environments for individuals, groups, families, organizations and communities on a larger scale. Students will

acquire the knowledge to lead and implement sustainable social change for good. Practicing in this field includes working with individuals, groups, families, organizations and communities to influence the laws, legislation and institutional practices and policies.



## Department Vision

The Department of Social Change and Innovation prepares students to lead and drive positive change in communities, organizations, businesses and government.

## Philosophy

Strong communities and organizations are in need of big-picture thinkers who can solve problems while supporting the needs of individuals. More and more social workers are taking on that role, becoming the voice that helps large entities thrive without losing sight of those who depend on them.

## Required Courses



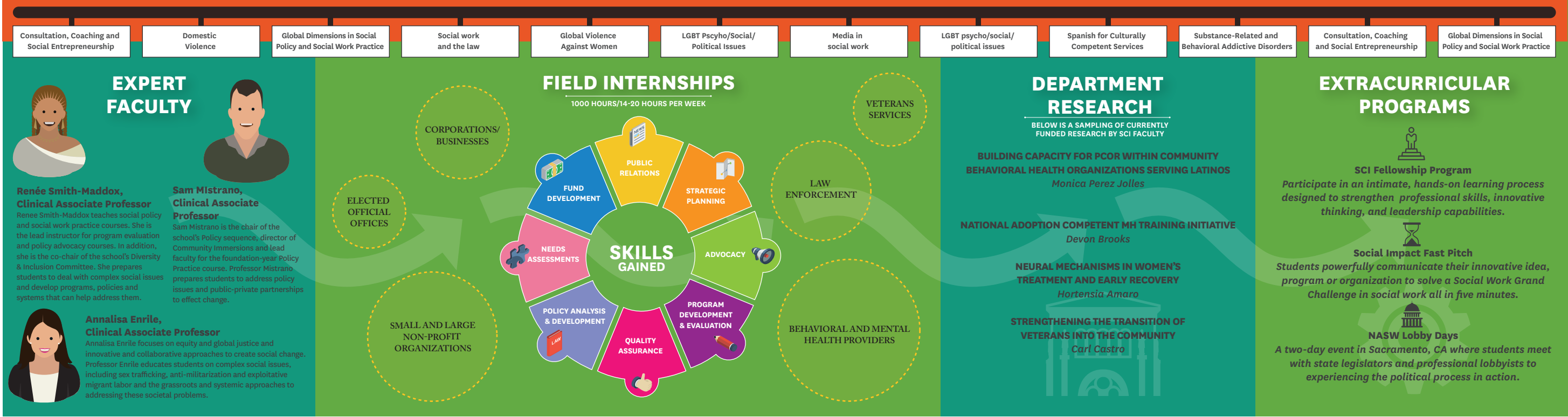
## Skills Learned



## Electives



## Student Experience



## Career Trajectory



**FAST FACT:** SCI students have the most flexibility in designing their career paths. Students may pursue careers in non-profit management, public affairs, community organizing, corporate social responsibility or human resources, among other fields.