

# Children Youth and Families

A guide to the CYF department of study within the MSW Program.

Students in this department focus on the needs of adolescents and transitional age youth while building strong social environments to support them. In today's complex society, families are more vulnerable than ever to issues, such as poverty, homelessness and drug and

alcohol addiction. In these situations, the entire family unit can be left in need of services and support. Social workers, trained to work in direct practice with families, can act as the support families need to rise above adversity and get their lives back on track after crisis.



## Department Vision

The Department seeks to foster the development of a healthy, happy, productive, diverse, and inclusive society by addressing the needs of children and their families.

## Philosophy

1. Prevention of developmental problems and long-term consequences
2. Use of community partnerships to advance policy and practice
3. Adhere to standards of translational, transdisciplinary, and team science
4. Focus on eliminating disparities in child and family development

## Required Courses



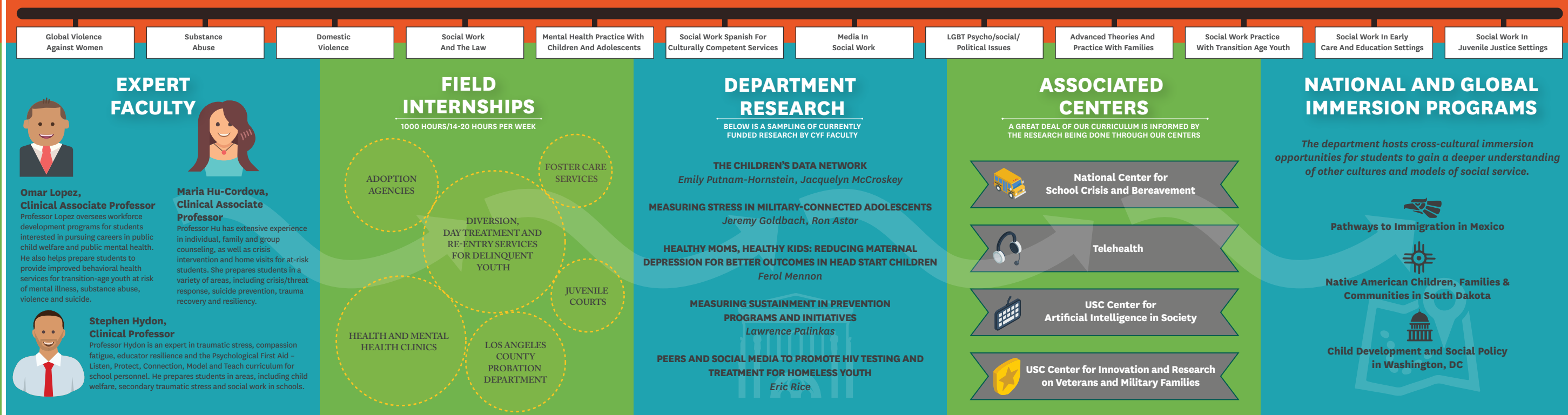
## Skills Learned



## Electives



## Student Experience



## Career Trajectory



**FAST FACT:** Many Children, Youth and Families students pursue licensure after they graduate, however this is not a requirement to move along a career trajectory.